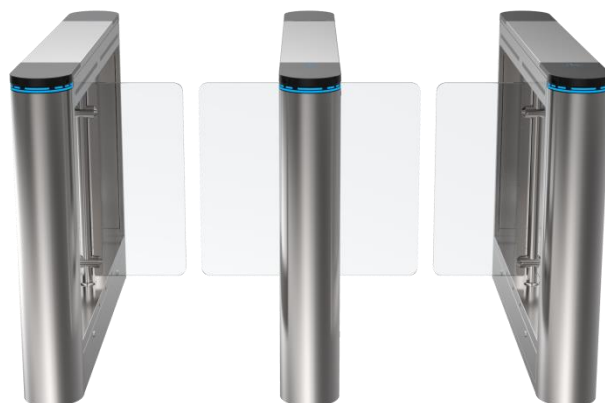




## H306C Product Show



two-channel

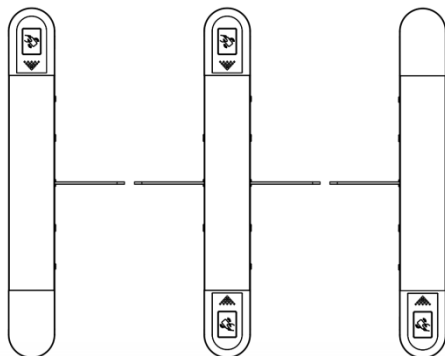
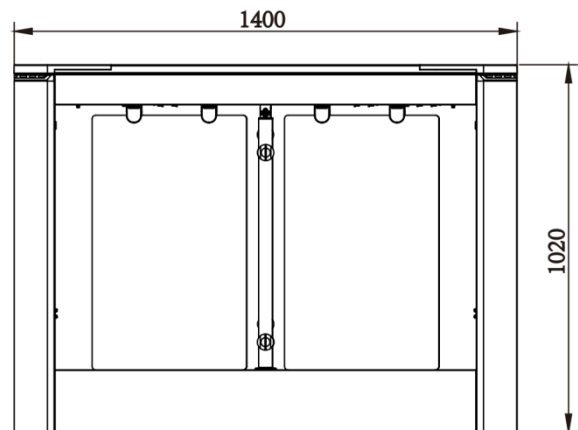
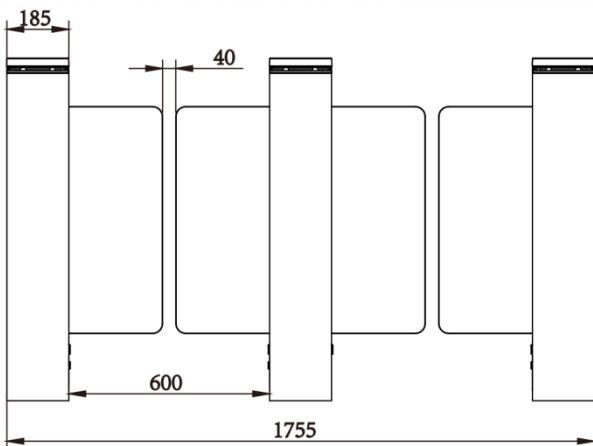


Single channel

## Functions & Features

- 1、 Reasonable and reliable design, low noise, smooth operation and long service life;
- 2、 With functions of anti-tail, anti-reverse pass and so on;
- 3、 Card can be set "with memory" or "without memory" functions;
- 4、 With automatic reset function, i.e. after having access to the gate, the gate automatically restores to the locked state if not pass within the time set;
- 5、 With infrared anti-clip function (anti-clip when gate is open or running);
- 6、 Compatible with IC, ID card, scanning and face recognition,etc.
- 7、 Two modes of operation are available: open or closed.
- 8、 Various working modes are available, including two-way card reading and one-way card reading,etc.

## Size drawing



## Parame-

Size (L*W*H)	1400*185*1020mm
Material	Top $\delta$ =1.5mm/ body $\delta$ =1.2mm SUS304
Filling Panel material	8mm clear Acrylic
Arm material	10mm clear Acrylic
Pass width	600-900mm
Movement	Brushless Movement of Swing Gate
Power supply	24V 150W
Input voltage	AC100V~240V,50/60HZ
Drive Unit	DC brushless motor 60K 50W
Pass rate	35-50 persons/minute
Open Speed	0.5s/1.5s
Sensor	7 pairs
Indicator Light	RGB light
Control Unit	Brushless control system
Noise	$\leq 65$ dB
Temperature	-20°C~+70°C
Humidity	$\leq 90\%$ No condensation
IP	IP4X
Environment	Indoor and outdoor (outdoor with canopy)

## Case share



Turboo Automation Co., Ltd

***Scan our QR  
code to follow***



official accounts



Telephone: 86-0755-23305213; 86-0755-29809981;



Head Address: 1st-4th Floor,Building#1,Guanjie Factory area,guanguang Road #1134, Guihua Community,Guanlan Street,Longhua District,Shenzhen ;

Production base: Factory Building No.1,Zhongzhi Science and Technology Park ,National High-tech Zone,Fuzhou City,Jiangxi ;